

STATEMENT OF AMENDMENT

411-419 Sutton Road, Southend-on-Sea,

SITE:	411-419 Sutton Road
PROJECT No:	16.563
DOCUMENT No:	602 [V1.1]
APPLICATION:	16/1503/FULM
DATE OF ISSUE:	30/08/2017

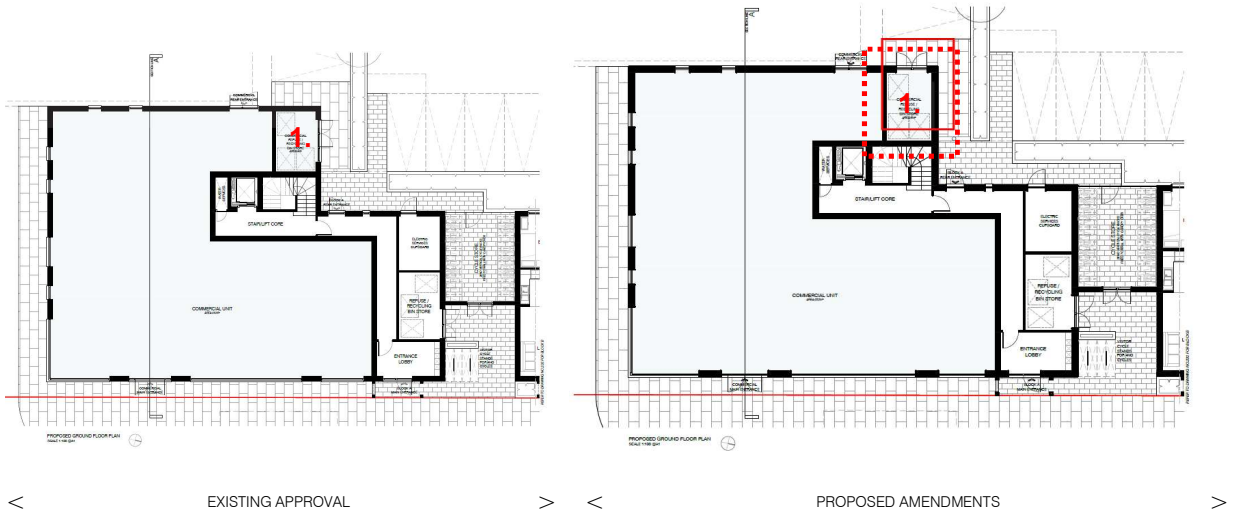
FRONT.

FRONT architecture ltd, 8 South Street, Rochford, Essex. SS4 1BQ, UK. Phone: + 44 [0]1702 831 415 | Email: hello@front-architecture.co.uk

1.0 INTRODUCTION

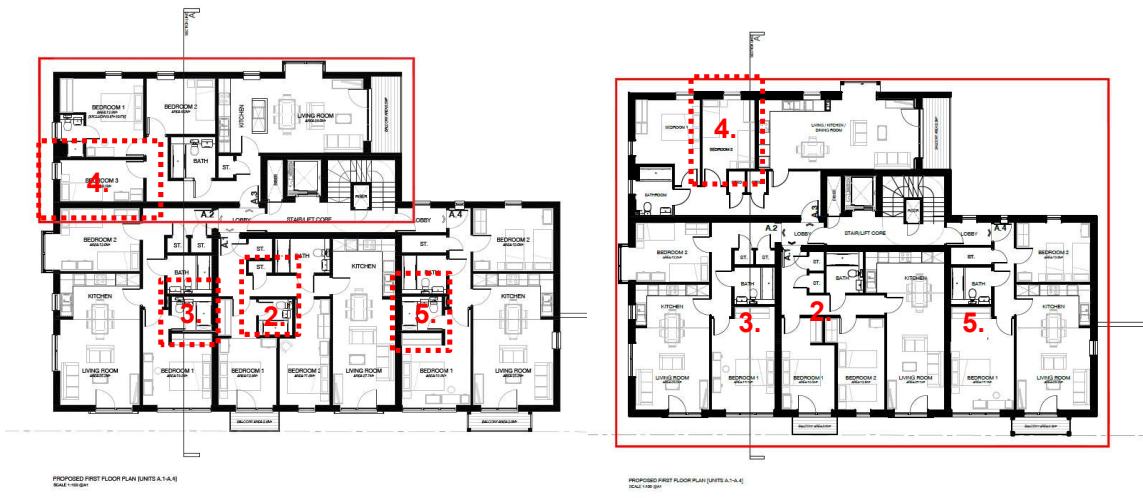
- 1.1 FRONT. Architecture have been appointed to carry out a 'Non-Material' amendment application for the site at 411-419 Sutton Road. The proposed changes are required to support the viability of affordable housing across the scheme, and reduce the potential the potential for harm and anti-social behaviour through pinpointed design changes to assist building management.
- 1.2 This document should be read in conjunction with the submitted architectural drawings.
- 1.3 An executive summary of the changes reads as follows:
 - 1) Retail refuse store door moved to rear elevation
 - 2) Unit mix changed to suit registered provider's requirements
 - 3) En-suites to affordable units in Block A and B omitted
 - 4) Minor elevation amendments to suit revised flat layouts.

2.0 SCHEDULE OF AMENDMENTS | UNITS A.1 – A.8



GROUND FLOOR AMENDMENTS

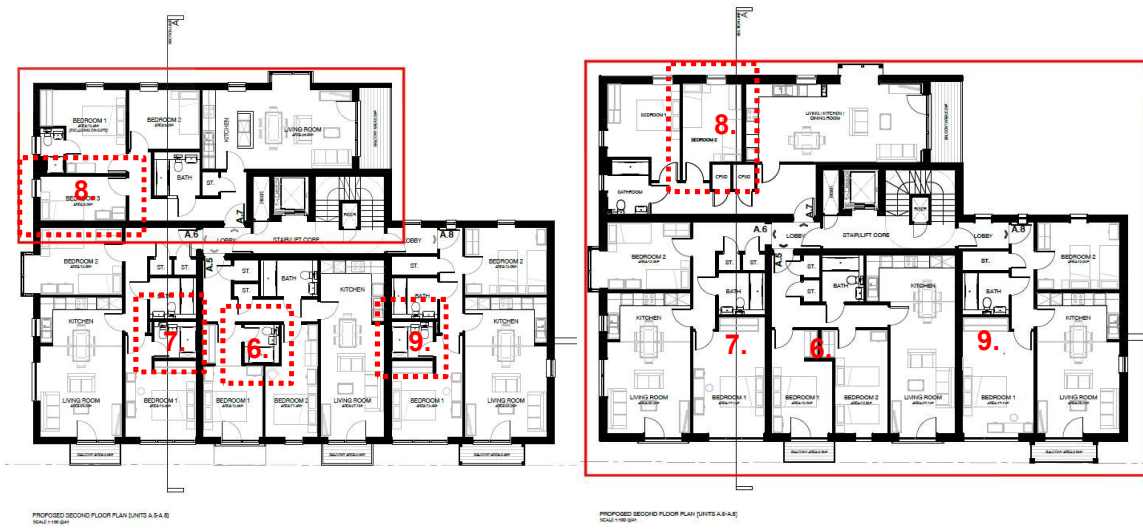
1. INTERNAL | EXTERNAL ALTERATION: Commercial Bin Store Access Moved.
Bin store access door has been moved from the North to the West side of the building.



<
EXISTING APPROVAL
>
<
PROPOSED AMENDMENTS
>

FIRST FLOOR AMENDMENTS

- 2. INTERNAL ALTERATION: Flat A.1 En-suite Removal.
Flat remains as a 2 bedroom, 4 person flat but with en-suite omitted .
- 3. INTERNAL ALTERATION: Flat A.2 En-suite Removal.
- 4. INTERNAL ALTERATION: Flat A.3 Removal of Third Bedroom.
Flat to change from 3 bedroom 4 person to 2 bedroom 4 person.
- 5. INTERNAL ALTERATION: Flat A.4 Removal of En-suite.

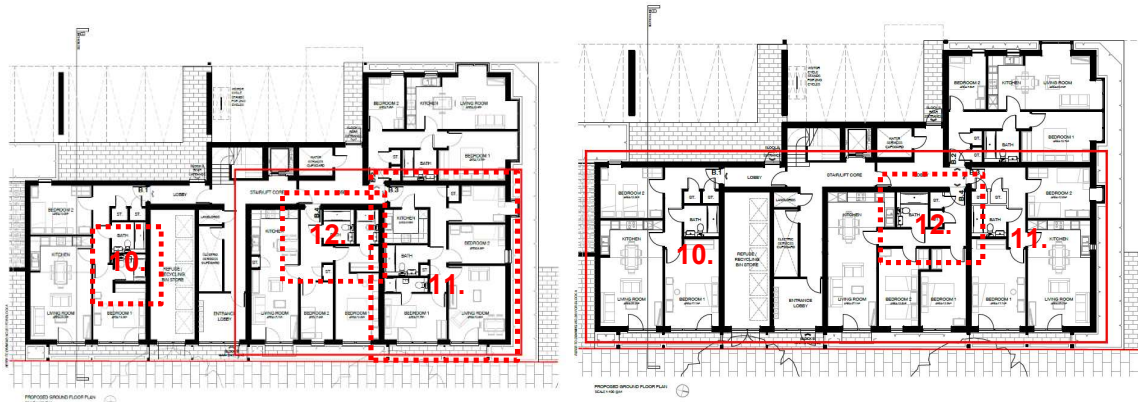


<
EXISTING APPROVAL
>
<
PROPOSED AMENDMENTS
>

SECOND FLOOR AMENDMENTS

- 6. INTERNAL ALTERATION: Flat A.5 En-suite Removal.
Flat remains as a 2 bedroom, 4 person flat but with en-suite omitted.
- 7. INTERNAL ALTERATION: Flat A.6 En-suite Removal.
- 8. INTERNAL ALTERATION: Flat A.7 Removal of Third Bedroom.
Flat to change from 3 bedroom 4 person to 2 bedroom 4 person.
- 9. INTERNAL ALTERATION: Flat A.8 Removal of En-suite.

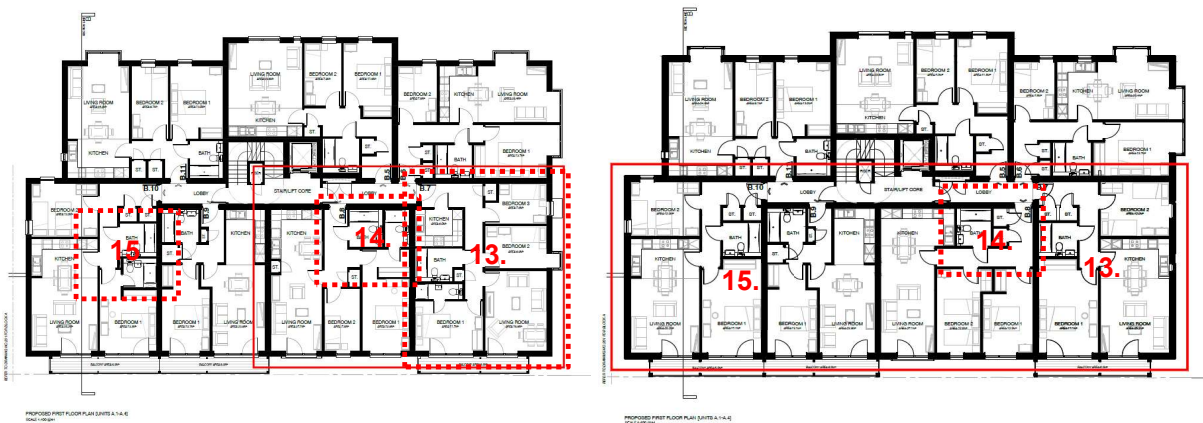
3.0 SCHEDULE OF AMENDMENTS | UNIT B.1 – B.18



< EXISTING APPROVAL > < PROPOSED AMENDMENTS >

GROUND FLOOR AMENDMENTS

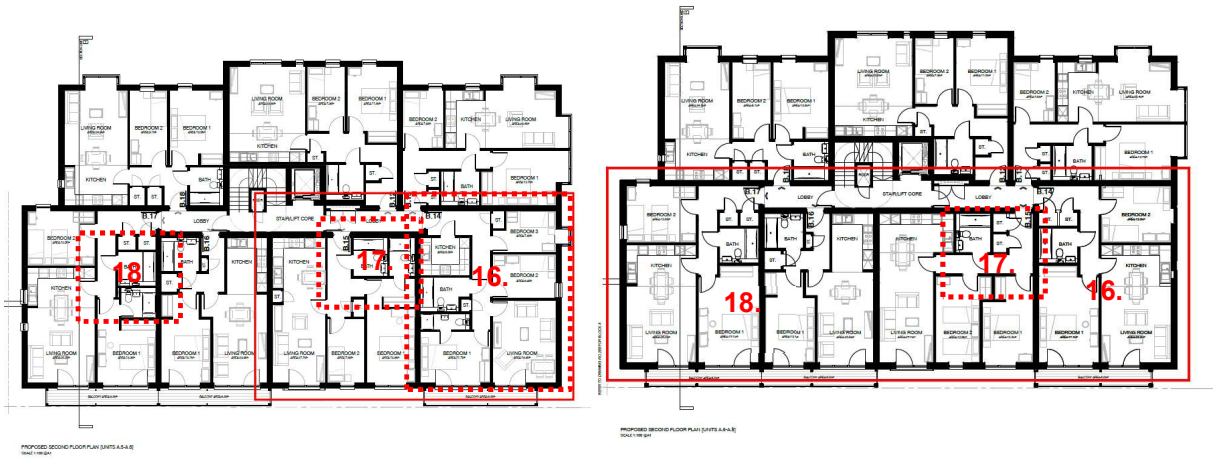
- 10. INTERNAL ALTERATION: Flat B.1 Removal of En-suite.
- 11. INTERNAL ALTERATION: Flat B.3 Rearrangement of Floorspace. Flat to change from 3 bedroom 4 person to 2 bedroom 4 person. En-suite omitted.
- 12. INTERNAL ALTERATION: Flat B.4 Removal of En-suite.



< EXISTING APPROVAL > < PROPOSED AMENDMENTS >

FIRST FLOOR AMENDMENTS

- 13. INTERNAL ALTERATION: Flat B.7 Rearrangement of Floorspace. Flat to change from 3 bedroom 4 person to 2 bedroom 4 person. En-suite omitted.
- 14. INTERNAL ALTERATION: Flat B.8 Removal of En-suite.
- 15. INTERNAL ALTERATION: Flat B.10 Removal of En-suite.



EXISTING APPROVAL



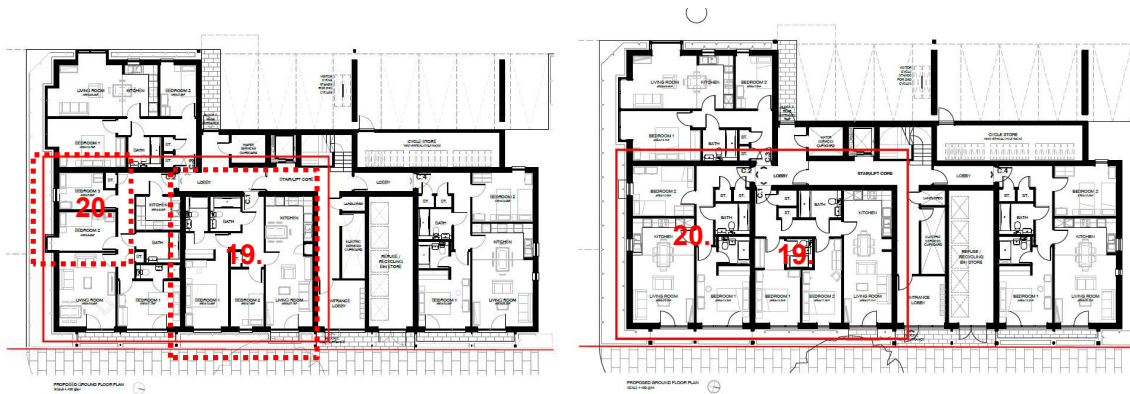
PROPOSED AMENDMENTS



SECOND FLOOR AMENDMENTS

16. INTERNAL ALTERATION: Flat B.14 Rearrangement of Floorspace.
Flat to change from 3 bedroom 4 person to 2 bedroom 4 person. En-suite omitted.
17. INTERNAL ALTERATION: Flat B.15 Removal of En-suite.
18. INTERNAL ALTERATION: Flat B.17 Removal of En-suite.

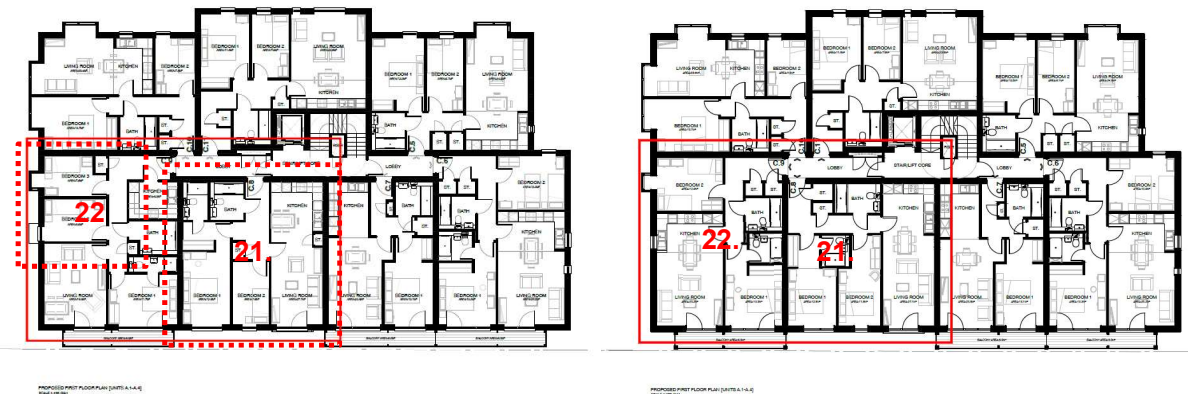
4.0 SCHEDULE OF AMENDMENTS | UNIT C.1 – C.18



< EXISTING APPROVAL > < PROPOSED AMENDMENTS >

GROUND FLOOR AMENDMENTS

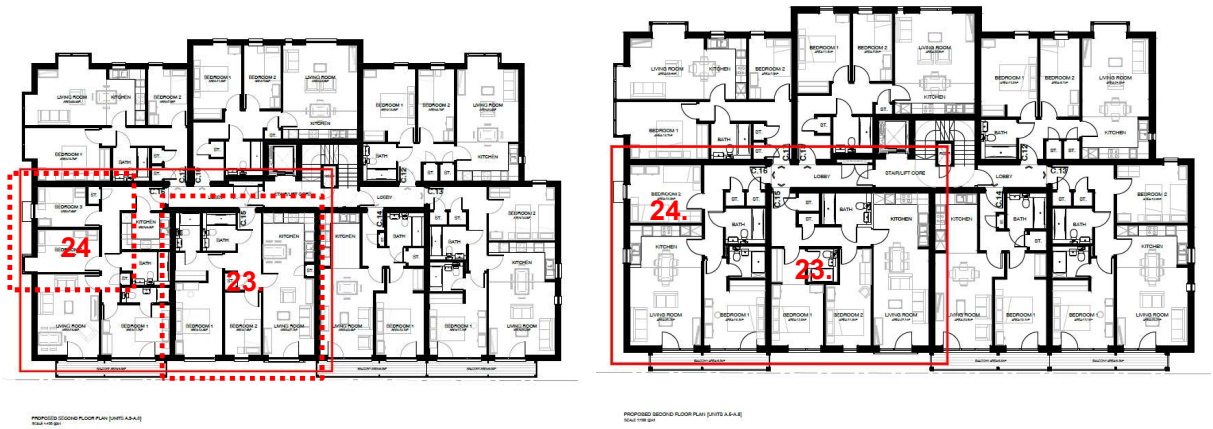
19. INTERNAL ALTERATION: Flat C.1 Layout Rearranged (no planning impact).
20. INTERNAL ALTERATION: Flat C.2 Removal of Third Bedroom.
Flat to change from 3 bedroom 4 person to 2 bedroom 4 person.



< EXISTING APPROVAL > < PROPOSED AMENDMENTS >

FIRST FLOOR AMENDMENTS

21. INTERNAL ALTERATION: Flat C.8 Layout Rearranged (no planning impact).
22. INTERNAL ALTERATION: Flat C.9 Removal of Third Bedroom.
Flat to change from 3 bedroom 4 person to 2 bedroom 4 person.



< EXISTING APPROVAL > < PROPOSED AMENDMENTS >

SECOND FLOOR AMENDMENTS

- 23. INTERNAL ALTERATION: Flat C.15 Layout Rearranged (no planning impact).
- 24. INTERNAL ALTERATION: Flat C.16 Removal of Third Bedroom.
Flat to change from 3 bedroom 4 person to 2 bedroom 4 person.